



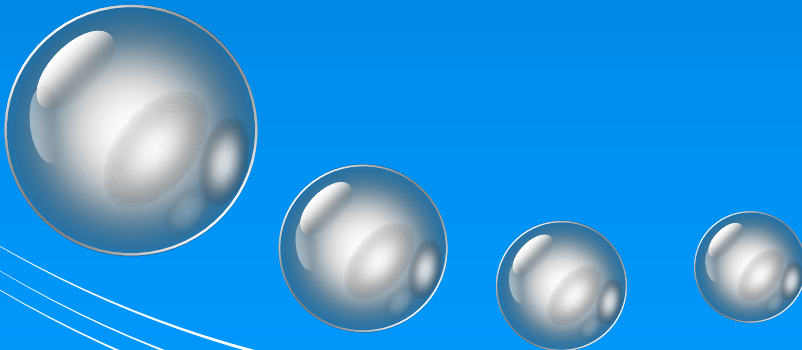
QIT Consulting, Inc.

QIT Aviation Safety Audit Management System

Copyright © 2008 QIT Consulting, Inc.

Program Introduction

2008





Contents



- ❖ Technology of Our Systems
- ❖ A Glance at QIT's Current Systems
- ❖ Case Study
- ❖ A Future System for Your Business
- ❖ QIT Consulting and Our Clients
- ❖ Next Step



Technologies of Our System



- ❖ Advanced Business Process
 - Next Generation, Web-based IEP and LOSA solution
 - Manage ALL types of system audit
 - Real-time incident and corrective/preventive tracking and reporting
- ❖ The Latest in Information Technology
 - Microsoft .net technology - flexible and scalable solutions
 - MS SQL Server - secure and reliable data management
- ❖ Robust Hardware for Web Hosting
 - Cisco 515 firewall and router
 - Intrusion detection
 - Redundant Tier 1 backbone
 - UPS power back up
 - 24x7 network monitoring



Existing System at A Glance

- ❖ QIT Aviation Safety Audit Management System
 - Manages IEP and LOSA safety audits
 - Utilizes ISO 9000 corrective actions management approaches to make sure that all incidents are being resolved



Next Generation Web-based System



QIT Aviation Safety Audit Manager - Windows Internet Explorer

http://24.240.192.49/Aviationsafety_test/MainFrame.asp

QIT Aviation Safety Audit Manager

QIT

Welcome to QIT Aviation Safety Audit Manager

Internal Evaluation Program

Line Observation Safety Audit

Corrective Action Management

Reminder

- 0 CARs are coming due in 7 days.
- 5 CARs are overdue.
- 0 CAR are pending.

[Details Link](#)

TOOLS Quick Setup:

- [Change Password](#)
- [Issue CAR](#)
- [Manage Human Factor](#)
- [Add New Account](#)

Executive Summary

IEP Risk Summary

- Blue item:1
- Orange item:2
- Yellow item:1

LOSA Top 3 Human Factor

- Task Saturation item:3
- Complacency item:1
- Communication (hear/readback, saturated frequency, personal) item:1

Internet 100%



Program Summary



- ❖ All you need to establish FAA's recommended
 - IEP (Internal Evaluation Program)
 - LOSA (Line Operation Safety Audit)
 - NOSS (Normal Operation Safety Survey for Air Traffic Control)
 - Other safety programs
- ❖ The package includes:
 - Internal Evaluation Program (IEP)
 - Line Operation Safety Audit (LOSA. Available in Standard Edition)
 - Normal Operation Safety Survey for Air Traffic Control (NOSS)
 - Built-in Human Factor and Root Cause Analysis functions to ensure that all issues are being resolved from the root
 - ATOS compatible (EPI and SAI formats)



Major Functions



- ❖ Next-Generation web-based solution
- ❖ Flexible and scalable
- ❖ Can be easily tailored to fit your particular needs
- ❖ Capable of handling 1 to 1000+ users and suppliers
- ❖ Program is ideal for:
 - IEP Audit
 - LOSA Program
 - NOSS Program
 - Any system audit
- ❖ Manages IEP, LOSA, ATC IEP, incident reporting and NOSS safety programs for all sizes of airlines and airports
- ❖ Generates IEP audit worksheets and retains audit results
- ❖ Keeps and tracks LOSA observations
- ❖ Dispatches, tracks and follows up issued CARs
- ❖ Utilizes built-in IEP, LOSA and CAR flow-charts for easy deployment and navigation
- ❖ Provides Risk and Human Factor trending for both LOSA and IEP
- ❖ Incorporates color-coded risk assignment
- ❖ Can be used for any system audits



Key Benefits



- ❖ Establish a cost-effective Web-based system to resolve problems quickly
 - Creates IEP audit worksheet and audit report online
 - Submits LOSA data online
 - Monitors your safety improvement activities in real-time
 - Collaborates departments, and divisions on a global scale
- ❖ Mitigates risk and makes sure all safety incidents are being resolved from the root cause
 - Integrates with ISO9000 root cause analysis and corrective action management processes
 - Provides built-in Human Factor review and Incident reoccurrence analysis to evaluate the effectiveness of corrective actions
- ❖ Saves time and administrative support on your everyday tasks
 - Prioritize actions based on key cost drivers
 - Enter data once and seamlessly share it with suppliers or internal users
 - Move from manual/Excel/Access systems to a fully automated system



Case Study

- ❖ Major US air carrier, which has lots of operations and hubs around the country



Case Study



❖ Before using QIT's system

- Safety Manager issued more than 60 CARs each year, and used a manual tracking system to handle all CARs
 - entailed very long paper trails
 - prolonged communications and an inconsistent process flow
- Lots of the CARs were lost track due to:
 - large system coverage and limited resources
 - inept feedback and follow-up process
 - no prioritization system for CARs

❖ Specific results were impressive

- Safety Managers can issue CARs wherever his/she found an issue
- CAR Receivers around the country can retrieve CARs and enter corrective actions to a centralized database
- Safety Managers can prioritize CARs by either Due Day or Risk Level
- Users can learn the patterns of human factors and prevent/mitigate similar incidents from happening in the future
- Shortened problem solving cycle-time by 50%



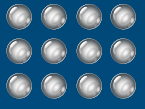
A Future System for Your Business



Customization Possibility



- ❖ QIT's programs are built on a flexible platform that is a foundation for our clients to incorporate new features such as:
 - Client's current terminologies and logos
 - Customized high quality reports
 - New fields that can capture more information
 - New program functions and modules that are based on the client's specific requirements
 - And much, much more...
- ❖ All customizations are done at competitive and reasonable costs



QIT Consulting and Our Clients



QIT Consulting, Inc.



- ❖ We are a Quality Assurance Consulting and Software Design Company with 20+ years experience in:
 - Quality Software Designs
 - Quality Assurance, Six Sigma and Lean Manufacturing Consulting
 - Supplier Management and Outsourcing
 - On-site Quality Consulting and Program Training

Email: sales@qitconsulting.com

Website: [Http://www.QITConsulting.com](http://www.QITConsulting.com)

Sales: 1877-208-7888



QIT's Client-base



❖ QIT's Client-base

- Automotive
- Manufacturing
- Aviation Industry
- Medical Device
- Government Service
- Engineering Service
- OEM
- IT Service
- Transportation

- Chemical
- Hospital and Clinic
- Military and Defense
- Electronic
- Injection Molding
- Cosmetic Products
- and many more ...



Some of Our Clients



GE
Nuclear Energy



Belkin Cop.
Computer Accessories



A Division of Magna
Auto Parts Supplier



Multimax (now is Harris)
US Government IT Service Provider



A Division of Tyco
Surgical Devices



Executive Jet
Aviation



Probiotec
Bio Tech



Alphawest
IT Service



Ahlers
Aerospace



Some of our Clients cont'



Presidential Airways
A division of Blackwater



Jayco
Display Device



CMC/CLA
Auto Parts Supplier



Pillar Data
Servers and Network Devices



South Carolina Yutaka
Auto Parts Supplier



Method
Cosmetic Products



Mensha
Machinery Manufacturer

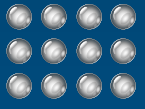


Canberra Fertility Center
Hospital



Riley
Medical Devices

For more details please visit <http://www.qitconsulting.com/Clients.htm>



Next Step



Next Step



- ❖ Try the full-function demo at QIT's [demo site](#)
- ❖ Work together with QIT to finalize your customization requirements, or
- ❖ If you wish to purchase an off-the-shelf program, please contact [QIT Sales Team](#) to process your order
 - your program will be set up in as little as 48 hours after your payment has been received
 - Place an Order online at:
<http://www.qitconsulting.com/Order>



QIT's Programs



- ❖ QIT Corrective Action Management
- ❖ QIT Supplier Quality Management
- ❖ QIT Customer Complaints Management
- ❖ QIT PPAP Management
- ❖ QIT Production Quality Management System with Six Sigma Measurements
- ❖ QIT Sigma Calculator