



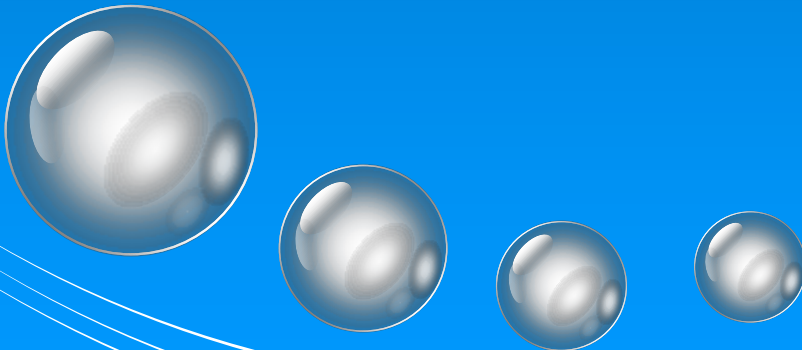
QIT Consulting, Inc.

QIT Supplier Quality Management System

Copyright © 2008 QIT Consulting, Inc.

Program Introduction

2008





Contents



- ❖ Technologies of Our System
- ❖ Existing System at A Glance
- ❖ Future System for You
- ❖ QIT Consulting and Our Clients
- ❖ Next Step



Technologies of Our System



- ❖ Advanced Business Process
 - Next generation web-based system for real-time supplier management, supplier performance reporting and monitoring
 - Managing Lot Inspection, Supplier PPM Report, Supplier On-time Delivery Report and Supplier Report Card
 - Optimizing and simplifying your supplier chain management processes
- ❖ The Latest Information Technologies
 - Microsoft .net technology - flexible and scalable solution
 - MS SQL Server - secured and reliable data management
- ❖ Robust Hardware for Web Hosting
 - Cisco 515 firewall and router
 - Intrusion detection
 - Redundant Tier 1 backbone
 - UPS power back up
 - 24x7 network monitoring



Existing System at A Glance

- ❖ QIT Supplier Management System
 - Managing Product Spec/Inspection Standards
 - Managing Incoming Inspections and Records
 - Managing SCAR and Internal CAPA
 - Monitoring Supplier Performance
 - Multi-language capability (English, Chinese, Spanish and French)



Next Generation Web-based System



QIT Corrective Action Management System Web Edition - Windows Internet Explorer

EN

http://192.168.0.100/SMS_GZ/MainFrame.htm

QIT Corrective Action Management System Web Edition

QIT Supplier Management System

Current User: Admin (Admin:Engineering Dept.)

System Dashboard

Main Dashboard

- Inspection Standard
- Incoming Inspection
- QA/QM Review
- Deviation Request(DVR)
- Supplier-base Report
- Detailed Supplier Report
- Internal CAPA
- Internal CAPA Reports
- Supplier CAR
- Supplier CAR Reports
- Tools

Reminders

CAR Type Pending Overdue Due Next 7 day

typeA1	0	2	0
type222	0	2	0
type111	1	12	1
SCAR	3	37	0

Top 3 CAR Failure Modes

- Assay out of Control : 33
- Inadequate Machine Setup : 4
- Improper Procedure/Sequence : 2

CAR Coming Due 7 Days

CAR-06-0060	02/08/2007
-------------	------------

Top 10 Supplier Summary

Supplier Name	Reject Quantity	Lot Quantity	PPM
qq234	222	222	1000000.000000
Microsoft	131399	2173888	60444.236317
IBM	0	88888	0
SUN	0	88888	0

Quick Links

- Add a New BIR
- Schedule a Inspection
- Enter Inspection Result
- Change Lot Status

Quick Setup

- Manage BIR
- Change Password
- Add a New User
- Manage Supplier
- Failure Mode Setting

Support Information

Email:

Service@qitconsulting

Sales Contact:

Sales@qitconsulting.com



Next Generation Web-based System

QIT Supplier Management System Web Edition - Windows Internet Explorer

http://24.240.192.49/QITCAR_SQA/MainFrame.htm

QIT Supplier Management System

Current User: Admin (Admin:Engineering Dept.)

System Flow Chart

Inspection Standard | Lot Inspection Management | Lot Disposition Management

```

    graph TD
      subgraph Inspection_Standard [Inspection Standard]
        ENB[Enter New BIR]
        MB[Modify BIR]
        RB[Release BIR]
      end

      subgraph Lot_Inspection_Management [Lot Inspection Management]
        PIP[Plan an Inspection]
        RIP[Release Inspection Plan]
        ELIR[Enter Lot Inspection results]
        ALD[Apply Lot Disposition]
      end

      subgraph Lot_Disposition_Management [Lot Disposition Management]
        LAD{Lot Accepted}
        IDR{{Issue Deviation Request (DVR)}}
        AD{{Apply DVR Decision}}
        RTV{{Return to Vendor (RTV)}}
        ISCA{{Issue Supplier Corrective Action (SCAR)}}
      end

      ENB --> PIP
      MB --> PIP
      RB --> PIP
      PIP --> RIP
      RIP --> ELIR
      ELIR --> ALD
      ALD --> LAD
      LAD -- Pending --> IDR
      IDR --> AD
      AD -- Rejected --> RTV
      AD -- Rejected --> ISCA
      AD -- Accepted --> SR[Supplier Report Card]
      AD -- Accepted --> SBR[Supplier-base Report]
      AD -- Accepted --> SRP[Supplier Report]
      RTV --> ALD
      ISCA --> ALD
  
```

The flowchart is divided into three main sections: Inspection Standard, Lot Inspection Management, and Lot Disposition Management. The process starts with 'Enter New BIR', 'Modify BIR', or 'Release BIR' leading to 'Plan an Inspection'. This is followed by 'Release Inspection Plan', 'Enter Lot Inspection results', and 'Apply Lot Disposition'. A decision diamond 'Lot Accepted' follows. If 'Pending', it leads to 'Issue Deviation Request (DVR)', which then leads to 'Apply DVR Decision'. From 'Apply DVR Decision', 'Rejected' leads to 'Return to Vendor (RTV)' or 'Issue Supplier Corrective Action (SCAR)', which then feed back into 'Apply Lot Disposition'. 'Accepted' leads to 'Supplier Report Card', 'Supplier-base Report', and 'Supplier Report'.



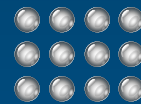
Program Summary



- ❖ It is everything you need to establish your Next Generation Global Supplier Quality Management System
 - Lot/Shipment Inspections
 - Supplier Scorecard
 - Product Spec/Inspection Standards
 - Supplier PPM Reports and Supplier On-time Delivery Performance
- ❖ It is the ideal solution for
 - Managing suppliers in a global scale
 - Tracking incoming lot inspection data, on-time delivery and supplier PPM performance
 - Communicating Product SPEC, PPM, On-time Rate and etc. between Engineering, Quality, Sales, Purchasing, customers and suppliers
 - Establishing 8D corrective action process with integrated 4W1H and 5-Why root cause analysis for your suppliers
 - Reducing operational costs, costs of poor quality, and non-value added administrative costs
 - Providing flexible and dynamic supplier performance reports, analysis and trending



Program Summary



- ❖ Flexible and scalable solution
- ❖ Can be easily tailored to fit customer's specific needs
- ❖ Capable of handling 1 to 1000+ users and suppliers from around the world
- ❖ No additional software purchase and installation is required
- ❖ Program is ideal for
 - Automotive industry
 - Maintenance/repair company
 - Manufacturers
 - OEM Supplier
 - Household Products
 - Import and export business



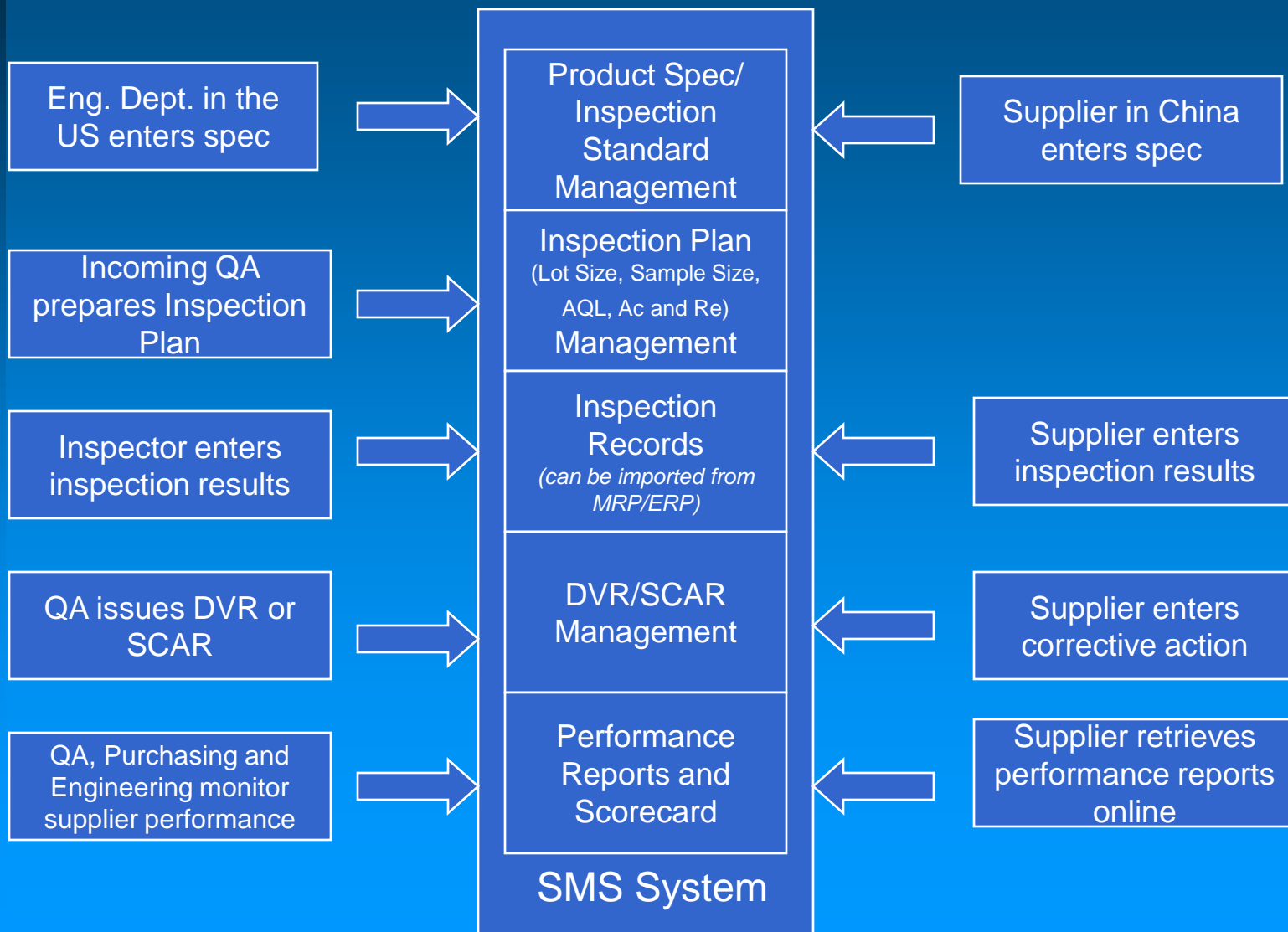
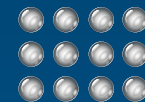
Key Benefits



- ❖ Transform your supplier management system to a Web-based Global System to surpass the competition
 - Storing inspection standards, lot inspection records and supplier performance data in a web-based database
 - Sharing information with users from around the world
 - Collaborating suppliers, departments, and divisions in real-time
- ❖ Save time and administrative support on your everyday tasks
 - Entering data once and seamlessly sharing it with suppliers or internal users
 - Moving from manual/Excel/Access system a fully automated system
- ❖ Quickly define key issues and get a complete view of your supplier quality performance
 - Storing and organize supplier performance data and reports in one place, and share them with users and suppliers from around the world
 - Providing supplier performance insights and trending from drill-down reports
 - Instantly discovering supplier issues and resolving them by using built-in SCAR management system

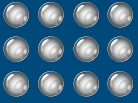


System Flow





Functions Overview



- ❖ Product Spec/Inspection Standard Management
- ❖ Incoming Inspection and Records Management
- ❖ Deviation Request (DVR) Management
- ❖ SCAR and Internal CAPA Management
- ❖ Supplier Performance Monitoring (Supplier Scorecard)
- ❖ Other Program Management Functions



Major Reports



- ❖ Drill-down-able Supplier Performance Reports (Overall Level, Monthly Level and Detailed Level)
 - Supplier Base Performance Reports
 - Supplier Base Rolling 12-month Performance Reports
 - Supplier Scorecard
 - Supplier Rolling 12-month Performance Reports
 - Items/Components Performance Reports
- ❖ SCAR (all reports are drill-down-able reports)
 - Overall SCAR Status Reports
 - Supplier SCAR Status Reports
 - Supplier Base Performance Reports
 - Supplier Performance Reports
 - Items/Components Performance Reports
- ❖ Internal CAPA Reports
 - CAPA Status Reports
 - Quality Cost Reports
 - Failure Mode Reports
 - Departments Reports
- ❖ Built-in Forms
 - Product Spec/Inspection Standard (PDF)
 - Master Inspection Plan (PDF)
 - Incoming Inspection Worksheet (PDF)
 - Incoming Inspection Report form (PDF)
 - Deviation Request form (PDF)
 - SCAR form (PDF)
 - CAPA form (PDF)

Note: All reports can be exported to Excel



A Future System for Your Business



Customization Possibility



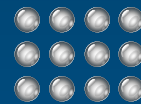
- ❖ QIT's programs are built on a flexible platform. It is a framework for our customers to incorporate with new features such as
 - Online PPAP submission, review and approval
 - Online RFQ management
 - Supplier Assessment
 - Advanced SPC (Cpk and Six Sigma Measurements)
 - Customer's terminologies and logo
 - Customized high quality reports
 - New fields to capture more information
 - Many more...
- ❖ All customizations could be done in a reasonable cost



QIT Consulting and Our Clients



QIT Consulting, Inc.



- ❖ We are a Quality Assurance Consulting and Software Design Company with 20+ years experience in:
 - Quality Software Designs
 - Quality Assurance, Six Sigma and Lean Manufacturing Consulting
 - Supplier Management and Outsourcing
 - On-site Quality Consulting and Program Training

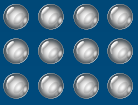
Email: sales@qitconsulting.com

Website: [Http://www.QITConsulting.com](http://www.QITConsulting.com)

Sales: 1877-208-7888



QIT's Client-base



❖ QIT's Client-base

- Automotive
- Manufacturing
- Aviation Industry
- Medical Device
- Government Service
- Engineering Service
- OEM
- IT Service
- Transportation

- Chemical
- Hospital and Clinic
- Military and Defense
- Electronic
- Injection Molding
- Cosmetic Products
- and many more ...



Some of Our Clients



GE



Belkin Cop.
Computer Accessories



A Division of Magna
Auto Parts Supplier



Multimax (now is Harris)
US Government IT Service Provider



A Division of Tyco
Surgical Devices



Executive Jet
Aviation



Probiotec
Bio Tech



Alphawest
IT Service



Ahlers
Aerospace



Some of our Clients cont'



Presidential Airways
A division of Blackwater



Jayco
Display Device



CMC/CLA
Auto Parts Supplier



Pillar Data
Servers and Network Devices



South Carolina Yutaka
Auto Parts Supplier



Method
Cosmetic Products



Mensha
Machinery Manufacturer

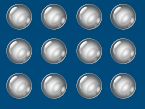


Canberra Fertility Center
Hospital



Riley
Medical Devices

For more details please visit <http://www.qitconsulting.com/Clients.htm>



Next Step



Next Step



- ❖ Try the full-function demo at QIT's [demo site](#)
- ❖ Work together with QIT to finalize your customization requirements, or
- ❖ If you wish to purchase an off-the-shelf program, please contact [QIT Sales Team](#) to process your order
 - your program will be set up in as little as 48 hours after your payment has been received
 - Place an Order online at:
<http://www.gitconsulting.com/Order>



QIT's Programs



- ❖ QIT Corrective Action Management
- ❖ QIT Supplier Quality Management
- ❖ QIT Customer Complaints Management
- ❖ QIT PPAP Management
- ❖ QIT Production Quality Management System with Six Sigma Measurements
- ❖ QIT Sigma Calculator